

SEND

# Short Breaks ACTIVITIES

For children & young people aged 5-19 with special educational needs and disabilities

TO SEE FULL RANGE OF ACTIVITIES & TO BOOK VISIT:  
[www.eequ.org/southwarkshortbreaks](http://www.eequ.org/southwarkshortbreaks)

*Weekend activities*

*Afterschool clubs*



*Holiday clubs*

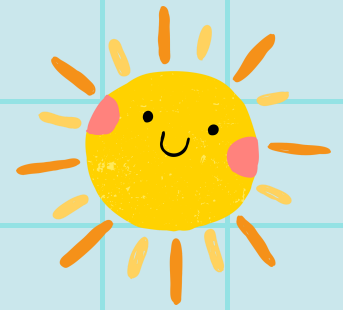


SCAN THE QR CODE TO SEE  
WHAT'S ON OFFER

*Southwark*  
Council



## WHAT ARE SHORT BREAKS?




Short breaks are opportunities for disabled children and young people to have fun and try new things, whilst also giving parents and carers a break from their caring role.

Short breaks can range from a few hours to an overnight stay, depending on a child or young person's needs.

In Southwark, the short breaks offer includes a range of weekend, afterschool and holiday clubs. We also offer some family trips and events from time to time.

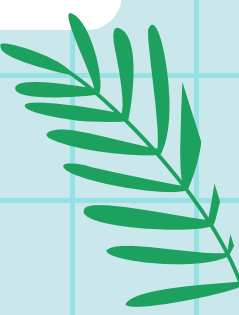


## WHO ARE SHORT BREAKS FOR?



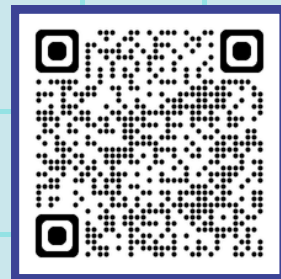
You can register for these afterschool, weekend and holiday clubs if your child meets these criteria:

- Aged 5 - 19
- Southwark resident
- With an Education, Health and Care Plan (EHCP)

If your child lives in Southwark but does not meet the other criteria then you can find other activities on the Southwark Local Offer website (see end of flyer for details).



## HOW TO REGISTER



- Go to [www.eequ.org/southwarkshortbreaks](http://www.eequ.org/southwarkshortbreaks) or scan the QR code
- Choose the activity you would like to book
- Create an account and answer the questions about your child and the support they need
- Once submitted, the council will check that your child meets the criteria
- If they do meet the criteria then your request will go through to the activity provider. They will let you know if they can offer you a place\*.

Most activities on EEQU provide support at a 1:3 or 1:4 ratio i.e. one member of staff to 3 or 4 children or young people.

## WHAT IF MY CHILD NEEDS MORE SUPPORT?

Some activity providers can offer 1:1 support for those with severe or complex disabilities or health conditions. To book these places you will need a magic booking link from a special school or the All Age Disability Service.

\*Places are subject to availability. There is a booking limit of 10 days per year for holiday schemes, as demand is high during school holidays.





## WHEN IS AN ASSESSMENT NEEDED?

If you need support over and above what is provided through these short breaks then you may need an assessment with the All Age Disability Team (AAD). They can assess your child's needs and establish whether you are eligible for further support. For more information and details of the criteria please visit the website.


Website: [www.localoffer.southwark.gov.uk/care](http://www.localoffer.southwark.gov.uk/care)

Call: 020 7525 1921

Email: [mash@southwark.gov.uk](mailto:mash@southwark.gov.uk)



## MORE INFORMATION ON THE LOCAL OFFER



Southwark's Local Offer website includes information about a wide range of services and activities for children and young people with SEND, and their families.

Visit: [www.localoffer.southwark.gov.uk](http://www.localoffer.southwark.gov.uk)



FOR FURTHER INFORMATION EMAIL

[thriveto25@southwark.gov.uk](mailto:thriveto25@southwark.gov.uk)

