



Cherry Garden Outreach

Cherry Garden School, Southwark's specialist primary school for children with complex learning needs has an Outreach service for Southwark Primary schools. Cherry Garden is commissioned by the LA to run this service.

We have two teachers on the outreach team:



Anna Parsons

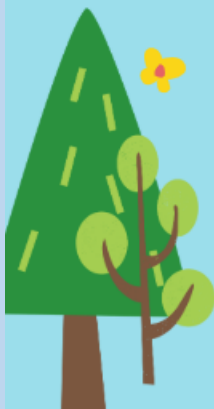
Alice Frost



What the support looks like:

Alice or Anna will come for an initial observation visit in school, talk to the teacher/**SENCO** and other staff working with the child. We will then write a **Record of Support** with recommendations to support the child.

In follow up visits, we can support you practically to implement these. For example: modelling intensive interaction or shared attention strategies, planning with the teacher, or providing a training session for staff, e.g. in **Makaton** or communication strategies.





Criteria for Outreach Support:

- Significant learning difficulties
- Requiring some specialist input
- Nursery - Y6 in a mainstream primary school in Southwark (and Nursery Schools)
- Do not have a diagnosis of Autism (these children can be supported through the Autism Support Team)
- Children do not need an EHCP to access this support

Referral process:

1. School SENCO fills in a Request For Support form
2. Parents/carers must sign to give their consent and the SENCO sends the form to outreach@cherrygardenschool.co.uk
3. Cherry Garden reviews the referral and makes a decision on how support can be offered and agree a package of support
4. At the end of the block of visits, further support can be requested via the online Feedback Form.

Training

We provide regular training courses free of charge for Southwark schools:

- SEND toolkit training day
- Cherry Branch Map virtual training sessions
- Makaton training
- Bespoke training in school as needed.

Free resources we provide:

1. Life Skills: New pack emailed out each half term (symbols for shopping and cooking)
2. Blast Off Group: Planning and resources for a language and communication group based around a theme. Works well for children who are keen communicators with emerging language skills. New pack emailed out each half term.

Contact us:

outreach@cherrygardenschool.co.uk

