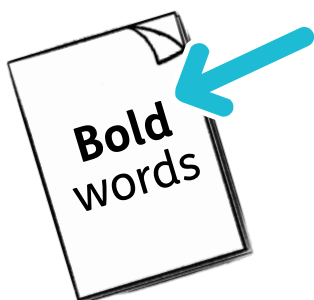


**Our plans to improve  
services for children and  
young people with SEND  
2022 to 2025**



# Contents

	Page
Introduction	3
SEND services in Southwark	4
What people said	7
Our main priorities for 2022 to 2025	9
What we will do	10
Working with parents and carers	17
What's next?	19
For more information	20



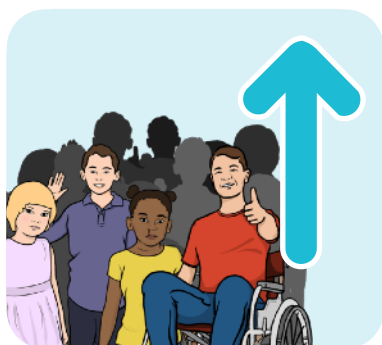
In this Easy Read document, hard words are in **bold**. We explain what these words mean in the sentence after we have used them.



Some words are [blue and underlined](#).

These are links that will go to another website which has more information.

# Introduction



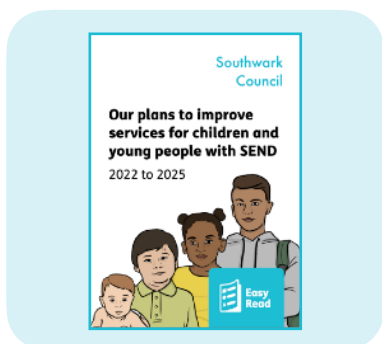
Southwark Council has written this plan to improve services for children and young people with **SEND**.



**SEND** stands for **S**pecial **E**ducational **N**eeds and **D**isabilities. Children and young people with SEND are aged 0 to 25 and need some extra support to learn and grow.



SEND services provide support for children and young people in education settings, like schools and nurseries.



This is our plan to improve SEND services in Southwark over the next 3 years, from 2022 to 2025.

# SEND services in Southwark

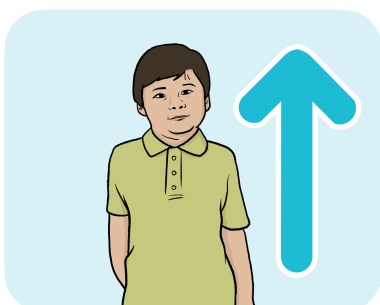


We have very good SEND services in Southwark.



Our SEND services in **mainstream** schools are some of the best in the country.

A **mainstream school** is a regular school that most children go to.



Since 2014 there has been an increase in the number of children and young people who need a SEND service.



In the future, we expect there to be more children and young people who need more care and support.



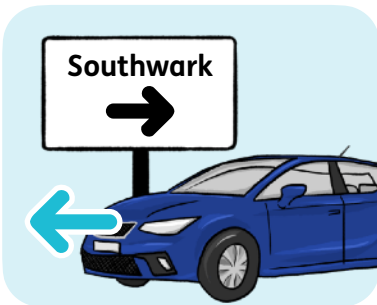
The cost of supporting each child and young person with SEND is increasing.



Recently we have opened a new school for autistic children and young people.



It will have over 100 autistic children and young people going to it by September 2023.



Some children and young people who need more support have to go to schools and services outside Southwark.



This is expensive and we would like to be able to give them a service closer to where they live.

## What we have achieved so far



Cherry Gardens Primary School has now moved to a new site and can take more children.



Spa Camberwell will be able to take more autistic children by September 2022.



Beormund Primary School will move to a better site by 2024. It will be able to take more children.



There will be a new service for autistic children at Charter School in East Dulwich by September 2023.

# What people said



We asked people what they thought as we were writing this plan.

People said we should:



- Get better at including children and young people with SEND who are Black, Asian or from an **ethnic minority**.

An **ethnic minority** is a small group of people of the same race, in a place where most other people are of a different race.



- Improve how parents, carers, children, young people, schools and professionals talk to each other.



- Look for better ways to collect and share information.



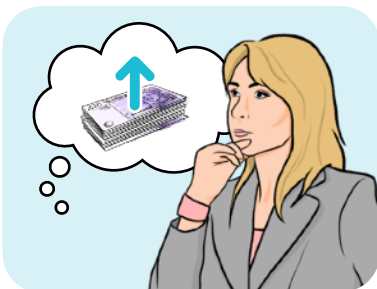
- Make sure people know what each professional does.



- Give more training and support to staff in schools.



- Improve the way we look after our staff and get new staff.



- Think about how we can improve services when the price of everything is going up.



- Look at how to help the people who are having to wait a long time for a service.



- Collect better information about children and young people with SEND.

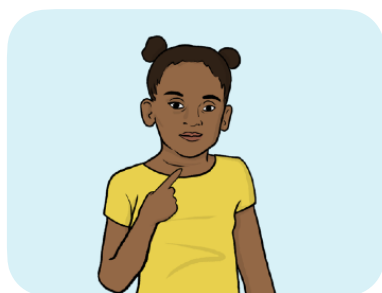


# Our main priorities for 2022 to 2025



**Priorities** are the most important things that we should do first.

Our main priorities are:



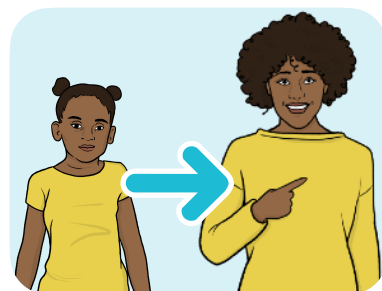
1. To improve our services for children and young people who need more care and support.



2. To improve how we work out which services each child with SEND needs.



3. To help children and young people with SEND to be more confident and learn more skills.



4. To improve the way we help young people as they become an adult.

# What we will do



We will:

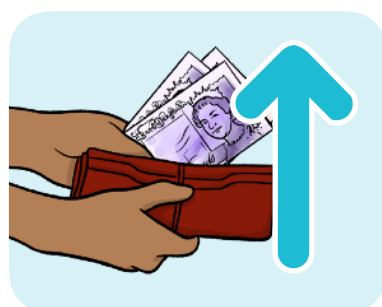
- Make sure that all our services can include everyone who needs them.



- Make plans so we can help more children and young people in the future.



- Make plans for each child and young person with SEND that are right for them.



- Find better ways to use our money because the cost of everything is going up.



- Work more closely with children, young people and their families.

# Improve services

We will:



- Carry on creating new services close to where people live, so they don't have to go out of Southwark to go to school.



- Help our primary schools to take and include more children who need more care and support.



- Work more with organisations that can help autistic children and children who need more care and support.



- Help our secondary schools to provide services for children and young people who need more care and support.



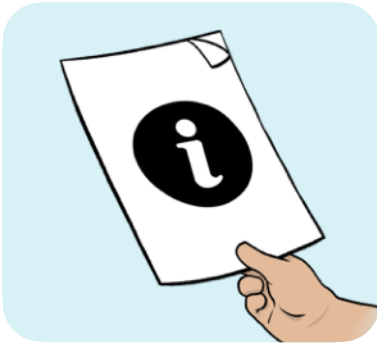
- Work more with children and young people who are likely to get into trouble with the law.

# Improving how we work out what service each child needs

We will:



- Help all organisations to use the same way of deciding what services a child or young person needs.



- Give parents and carers better information about SEND services.



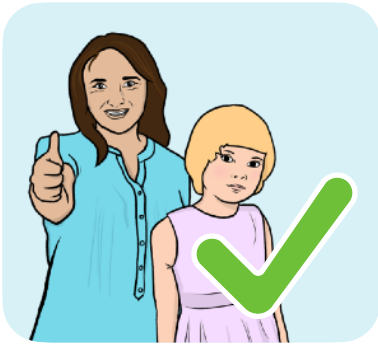
- Improve the way we work with the parents of very young children with SEND.



- Provide better services for very young children with SEND, before they start school.



- Give more training to staff who work with young children so they know more about services for children with SEND.



- Help children with SEND to get the right service at the right time.



- Help children who are in trouble with the law because they didn't get the right support when they were younger.

## More confidence and skills

We will:



- Work with schools and colleges to give better support to children and young people with SEND.



- Make sure services for very young children know about other services for young children with SEND.



- Get more information about children and young people who are not going to school.

# Becoming an adult

We will:



- Help young people who are leaving school to:
  - Go to college.



- Get some training.



- Find a job.



- Create more services for young people who are leaving school.



- Give young people more options of things to do when they leave school.



- Help young people find the right thing to do after they leave school.



- Help more young people with SEND to:
  - Get a job.



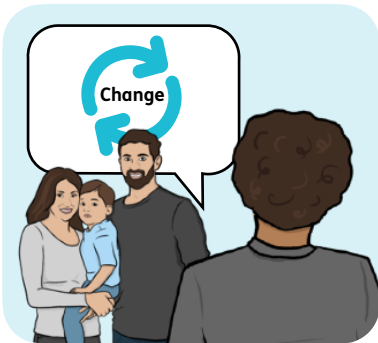
- Live independently.



# Working with parents and carers



We want to work better with children, young people and their parents and carers.



We listened to parents and carers and we will:

- Tell parents and carers about any changes to services - even small changes.
- Include parents and carers in decisions about our services and how we run them. We will listen to what they tell us.
- Respect parents and carers because they are experts. We will help them to do the best for their children.





- Tell people before any changes take place so that they have time to get ready for the changes.



- Look at ways to support children and young people with SEND after school and during the holidays.

# What's next?



We are thinking about the needs of children and young people who are Black, Asian or from an ethnic minority who have SEND in everything we do.



We will write a yearly report which explains how this plan is working.



We will share this report with parents, young people and all the organisations we work with.

# For more information



You can look at our website here:  
[www.southwark.gov.uk](http://www.southwark.gov.uk)



If you need more information please  
contact us by post:

Southwark Council  
Children's and Adults' Services  
Department  
PO Box 64529 SE

This Easy Read information has been produced by [easy-read-online.co.uk](http://easy-read-online.co.uk)