



mencap

PRE- INTERNSHIP STUDY PROGRAMME

Learn about
Mencap's Pre-
Internship option for
young people, aged
16-24 with an EHCP
that can lead to a full
Supported Internship.

Inside

- What are Supported Internships?
- What is the Pre-Internship Study Programme?
- What does the Pre-Internship Study Programme involve?
- Find out more.

employment.support@mencap.org.uk | mencap.org.uk

WHAT IS IT?

An introduction to Supported Internships and Mencap's Pre-Internship Study Programme

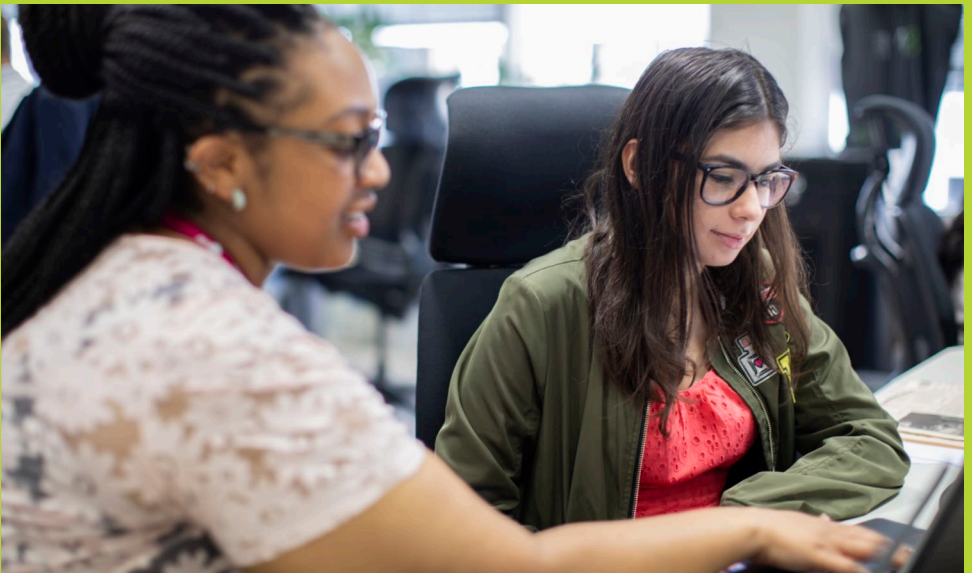
A Supported Internship is a programme for SEND young people aged 16-24 with an Education, Health and Care Plan who want to work. It helps develop the skills, knowledge and experience you will need to progress into a paid job.

A Supported Internship requires learners to complete 400 hours of work experience with an employer. But Mencap understands that some learners will not be able to do this straight away.

That's why we offer a Pre-Internship option. This is a 1-year programme that teaches skills for the workplace and provides the chance to begin interacting with employers.

When learners complete the Pre-Internship Study Programme, they may then progress onto the Supported Internship, if they are ready to complete the required work experience.

We will work with you and your family/carers to help identify whether the Pre-Internship Study Programme is the best option for you.



WHAT IT INVOLVES



Mencap's Pre-Internship Study Programme involves lots of activities. If you are enrolled on the programme, you will:

- Meet with employers by visiting workplaces and completing some work experience.
- Learn how to be more independent. We will teach things like how to stay safe online and in your community, and how to use public transport.
- Learn important skills for the workplace like communication and social skills and how to dress and present yourself for work.
- Understand what kind of work you want to do. Mencap will assess your skills and you will have a careers discussion with our Level 6 qualified Career's Leader to identify which sectors and roles you are best suited to.



Find out more

To find out more about the Pre Internship Study Programme and how to enroll, you can contact: employment.support@mencap.org.uk
Or, you can contact one of the staff members listed in our local Supported Internships Contact Sheet.

These contact sheets, along with more information about this programme and others, can be found on Mencap's website, at: <https://www.mencap.org.uk/advice-and-support/employment>

Here, you can find lots of useful information about finding a job, while you can call our national learning disability helpline for advice and support on a range of other issues on:
0808 808 1111